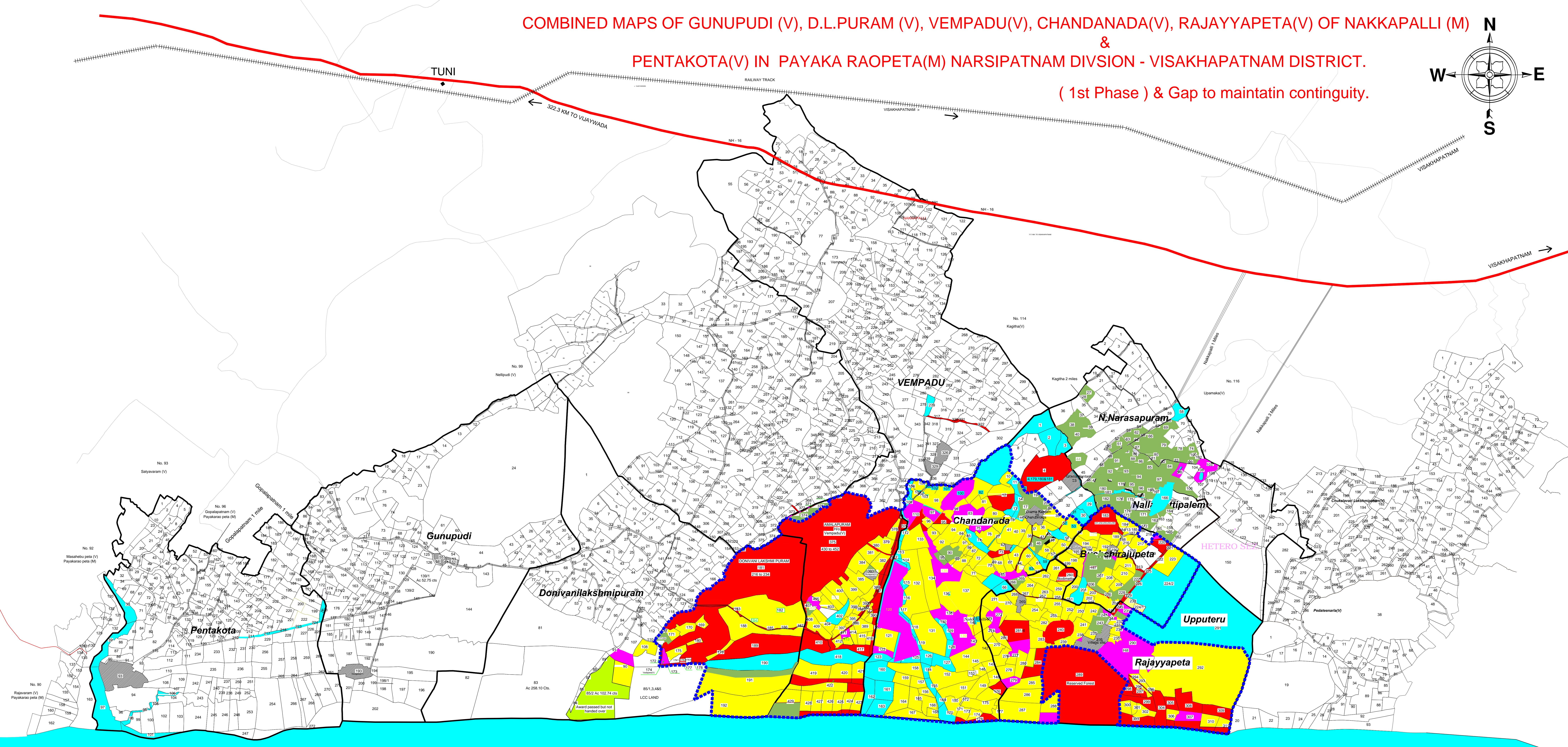
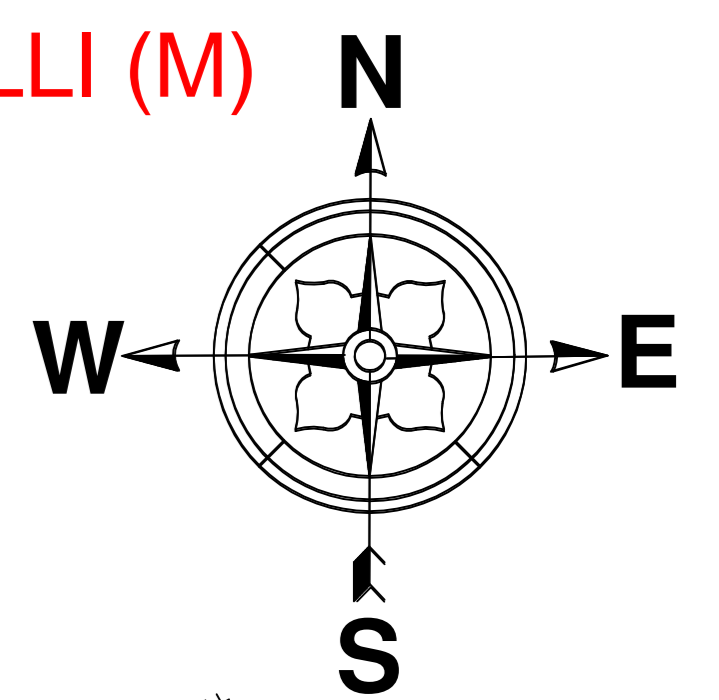


COMBINED MAPS OF GUNUPUDI (V), D.L.PURAM (V), VEMPADU(V), CHANDANADA(V), RAJAYYPETA(V) OF NAKKAPALLI (M)
 &
 PENTAKOTA(V) IN PAYAKA RAOPETA(M) NARSIPATNAM DIVISION - VISAKHAPATNAM DISTRICT.
 (1st Phase) & Gap to maintatin continguity.



INDEX:

- Project Boundary (4339 Ac.)
- Patta Land 1st phase (2440 Ac.)
- Govt. Land 1st Phase (1446 Ac.)
- Patta Land 2nd Phase (166 Ac.)
- Govt. Land 2nd Phase (370 Ac.)
- Patta Land Award Passed but not handed over
- Govt Land which are not considerable covered under Gedda, Cheruvu,Gorge,Rasta etc.
- Village Boundary
- Village site
- Road